

FOR LEASE

918 South D Street, Fort Smith, AR



Lease Rate	\$1,875
Lease Type	Modified Gross
Building Size	5,248
Lot Size	0.84 AC

PROPERTY OVERVIEW

This building has 345 SF of office space and 4,903 SF of warehouse space. The warehouse has 4 overhead doors. Two overhead doors are 8'x8' and two are 10'x10' which includes 1 truck well, 2 truck docks and 1 ground level door. Sidewalls are 12 feet and the clear ceiling height is 10 feet. The office has central heat and air conditioning. The warehouse has two hanging gas heaters and two ADA compliance restrooms.

PROPERTY FEATURES

- 4,903 SF WAREHOUSE SPACE
- 345 SF OFFICE SPACE
- 10 FT. CLEAR CEILING HEIGHT
- 4 OVERHEAD DOORS
- 2 ADA COMPLIANCE RESTROOMS



Rodney H. Ghan
Principal Broker

Office: 479-478-6161

rhghan@rhghan.com

rhghan.com

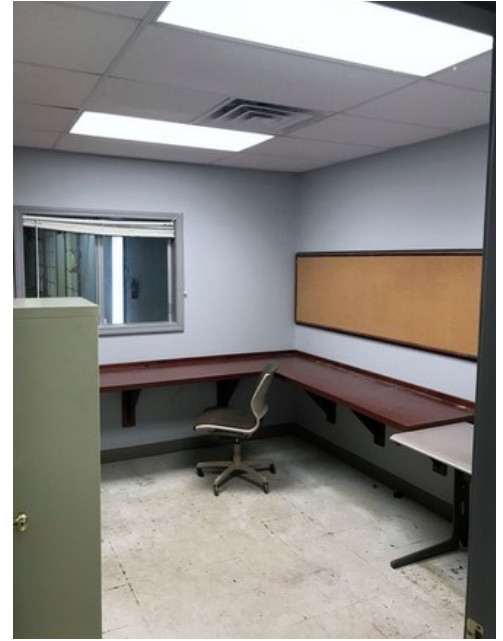


The information contained herein has been obtained from sources we believe to be reliable; however, Ghan & Cooper Commercial Properties has not verified, and will not verify, any of the information contained herein, nor has Ghan & Cooper Commercial Properties conducted any investigation regarding these matters and makes no warranty or representation whatsoever regarding the accuracy or completeness of the information provided. All potential buyers/tenants must take appropriate measures to verify all of the information set forth herein.

FOR LEASE

918 South D Street, Fort Smith, AR

Ghan & Cooper
COMMERCIAL PROPERTIES
4611 Rogers Avenue
Fort Smith, Arkansas
72903



The information contained herein has been obtained from sources we believe to be reliable; however, Ghan & Cooper Commercial Properties has not verified, and will not verify, any of the information contained herein, nor has Ghan & Cooper Commercial Properties conducted any investigation regarding these matters and makes no warranty or representation whatsoever regarding the accuracy or completeness of the information provided. All potential buyers/tenants must take appropriate measures to verify all of the information set forth herein.